

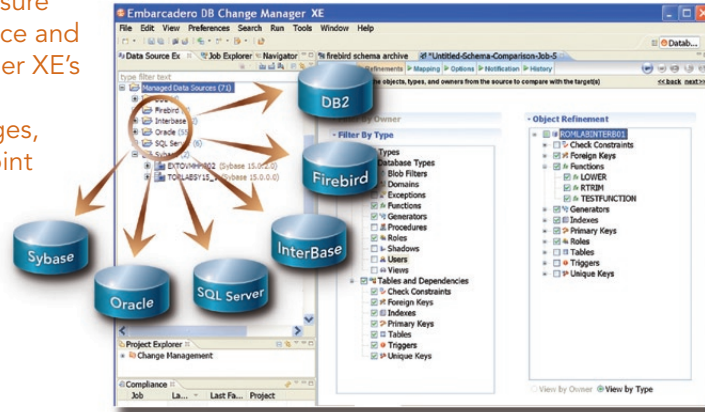
DB Change Manager XE

Simplify, automate, and report on database changes



Embarcadero® DB Change Manager™ XE is a heterogeneous tool that helps database administrators and developers simplify, automate and report on database changes. It supports all major databases from a single interface to streamline development and ensure database availability, performance and compliance. DB Change Manager XE's compare, synchronization, and auditing capabilities track changes, roll out new releases, and pinpoint problems.

- Simplify and automate database change management
- Streamline development cycles
- Ensure database availability, performance, and compliance



RELIABLE, REPEATABLE, TRACKABLE DATABASE CHANGE MANAGEMENT

Organizations struggle to adopt reliable, repeatable, and efficient processes to manage database changes. You want to ensure that changes applied to production make it back into the database design, development, and test environments; you want to easily bundle changes together for migration between environments; and you want to keep track of tables, procedures, settings, and privileges. A tool designed to handle database change management tasks can simplify processes, streamline complex tasks, reduce the chance for errors, and minimize downtime.

DB Change Manager XE is a database comparison, alter, and synchronization tool that generates reports and reconciles differences between databases, tables, schemas, and other database objects. With DB Change Manager XE you can easily compare any two databases and create schema and configuration baselines. Sophisticated object mapping features let you select only what you need and accelerate your comparison jobs.

STREAMLINE DEVELOPMENT CYCLES

Each day development teams create new applications, modify existing ones, and roll out customizations or updates to packaged applications that involve changes to the underlying database. Developers need to collaborate with each other, DBAs, and data modelers to successfully coordinate change across the development lifecycle.

DB Change Manager XE offers developers visibility into what is happening within the development, test, and production environments. They can capture a snapshot of changed objects and automatically generate a change script, eliminating the need to determine the correct syntax for dependant objects and ensuring that data is preserved. DB Change Manager XE integrates with source code control (SCC) software so developers can easily correlate SQL, schema or reference data changes with application code changes by linking an archive with the corresponding version of the application code within the SCC repository.

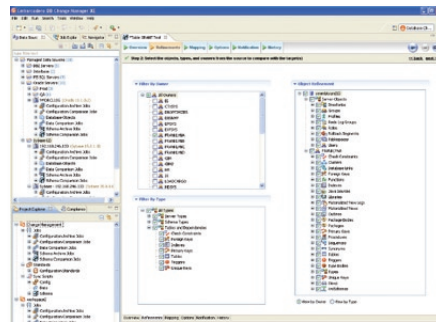
Realistic test data is critical to producing the best application code. DB Change Manager XE's data masking features helps protect data privacy in the development lifecycle by creating accurate test data and then quickly moving the masked, yet realistic and fully functional data from Production into Development or Test environments. This ensures accurate testing while protecting personally identifiable information (PII).

ENSURE DATABASE AVAILABILITY, PERFORMANCE, AND COMPLIANCE

DBAs are responsible for safeguarding database performance and availability while ensuring that database configurations adhere to regulations. DB Change Manager XE helps DBAs track changes to structures, users, permissions, and database settings.

DB Change Manager XE also allows DBAs to specify configuration standards, which can be used to check hundreds of databases and quickly identify security risks. It reports on points in time – or differences between points in time-saving DBAs hours of troubleshooting while ensuring compliance with policies and performance standards.

Only DB Change Manager XE provides you with a single interface to compare schema, data, and configuration across different database types.



Select schema objects and types for comparison or archive jobs.

Key Features

- Single interface for all major DBMSes
- Schema archive snapshots, compare and synchronization
- Data compare and synchronization with custom mapping features
- Configuration audits
- One-to-many comparison jobs
- Advanced alter script generation; handles object dependencies and preserves data
- Integrate with Source Code Control (SCC)
- Command line API
- Flexible report formats, including HTML, PDF, XML, CSV, RTF

New! in DB Change Manager XE

- Embarcadero® ToolCloud™ – centralized license management and tool deployment
- Embarcadero® InstantOn™ – run tools without installation on local machine, run multiple versions without conflicts
- Easy upgrade path to Embarcadero® All-Access™

General Features	Description	XE Developer	XE Pro	XE Enterprise
Support DBMS Specific Features	Deep functional support for DB2 for LUW, Firebird, InterBase, Oracle, SQL Server and Sybase. Change scripts leverage DBMS-specific features including objects, options and syntax	x	x	x
Source Code Control Integration	Integration with third-party source code control products supported via Eclipse Team API for sharing archives, sync scripts, jobs, datasources, and job results	x	x	x
Job History	Track previous comparison runs and reload results to generate synchronization scripts and results	x	x	x
SQL Editor	Code folding, syntax highlighting, error identification, outline view	x	x	x
Unicode Support	Full support of Unicode characters	x	x	x
Flexible Reporting	Supports HTML, PDF, XML, CSV, and RTF reports for all job types	x	x	x
Email Notification with Open and Extensible API	Configurable email notification via JavaMail. Open API allows users to create their own customized notification extensions via Java/Eclipse		x	x
Command Line API	Command-line generation wizard generates batch or ANT scripts with multi-job execution			x
Data Source Connections	Supports a specified number of databases under management, for each licensed DBMS platform	10	unlimited	unlimited
Schema & Configuration Management		XE Developer	XE Pro	XE Enterprise
Schema Archive and Compare	Capture an archive of a schema and then compare and view differences between the archive and live database, archive, to archive or compare live databases. View results of prior schema comparison executions at any time.	x	x	x
Advanced Alter Generation	Generate alter scripts to synchronize selected objects or restore to a prior state. Handles object dependencies, and preserves data	x	x	x
Flexible Object Reporting	Capture an entire database or narrow selection by object type, owner, a specific set of named objects, or wildcard filtering	x	x	x
Manage Server Objects	Support for server objects within archive and compare jobs, e.g., rollback segments, server triggers, and database devices	x	x	x
Manage Database Configurations	Archive and compare database configuration settings	x	x	x
Manage System Objects	Support for system objects within archive and compare		x	x
Cross-DBMS Schema Compare	Schema comparison and synchronization between Oracle <> SQL Server and Sybase ASE <> SQL Server		x	x
Schema Auto-synchronization	Automatically synchronize the target to match the source once there is a successful comparison		x	x
One-to-Many Compare	Compare one source against multiple targets, inside of one job		x	x
Data Compare and Synchronization		XE Developer	XE Pro	XE Enterprise
Cross-DBMS Data Compare	Compare and synchronize data either inside of one database, or between two different databases	x	x	x
Automated Object Mapping	Automatic mapping of tables by primary key or unique index. Manually override table mapping or match keys	x	x	x
Configurable Comparison Options	Control comparison jobs with options such as ignoring training spaces and mixed case; match empty strings with nulls	x	x	x
Data Auto-synchronization	Automatically truncate the target data as data from the source is streamed to the target.	x	x	x
Compression Comparison	Quickly compare large volumes of data, particularly effective with wide rows and over slower networks	x	x	x
Data Masking	Shuffle or randomize columns in a data compare job with auto-synchronization	x	x	x
Audit & Compliance Reporting		XE Developer	XE Pro	XE Enterprise
Configuration Standards	Use custom or live configurations parameter values to create standards. Audit database configurations to check for security liabilities and performance standards conformance with other types of standard settings		x	x
Archive Configuration and Schema Settings	Schema and configuration archives provide historical record for compliance auditing and reporting		x	x
Schema Comparison Detail Report	Outlines what objects have actually changed either between points in time, or between two live environments, including color-coded DDL differences		x	x

DBMS Support

- DB2 for LUW v8, v9 and v9.5
- Firebird 1.5, 2.0
- InterBase 2007, 2009
- Oracle 8i, 9i, 10g and 11g
- SQL Server 2000, 2005, and 2008
- Sybase ASE 12.5, 15, 15.0.1 and 15.0.2

System Requirements

- 1.2 Ghz processor with 1 GB of RAM
- 1 GB disk space
- 1024x768 16-bit display
- Windows® XP Professional, Windows Server 2003, Windows Vista (Ultimate and Business) – 32-bit architecture only
- Windows® 7
- Red Hat Enterprise Linux 5.0, x86-32, GTK 2 or SUSE Linux Enterprise Server (x86) GTK+ 2.x

Download a Free Trial at www.embarcadero.com sales@embarcadero.com