



Delphi® XE2

The fastest way to build native applications for Windows, Mac and iOS



Embarcadero® Delphi® XE2 is the easiest way to build the coolest applications. Deliver ultra-rich and data driven connected business applications on Windows, Mac and iOS.

Delphi XE2 is a rapid visual development environment that makes it easy to build "rich" business applications with visual tools, component frameworks, database and services connectivity, and high performance native compilers. Delphi's VCL framework is designed to rapidly build visual Windows API based GUI applications and is one of the all-time most popular solutions for ISVs and business developers building native Windows applications. Delphi's new FireMonkey™ application platform makes it easy to build visually stunning, CPU/GPU powered applications for Windows, Mac, and iOS with HD and 3D user interfaces and database and cloud connectivity.



DELIVER FAST NATIVE 32-BIT AND 64-BIT APPLICATIONS

Delphi VCL and FireMonkey applications are ultra fast because they are natively compiled. Delphi XE2 also includes full 64-bit Delphi language, RTL, VCL, and FireMonkey support on Windows giving your applications access to even more memory and 64-bit Windows sub-systems. Native applications are better suited for packaged, business, and industry applications because they are faster and more responsive than RIA platforms, virtual machine runtimes and dynamic languages.

DEPLOY TO WINDOWS, MAC, AND iOS

With the included FireMonkey platform, Delphi makes it easy to build your application and compile natively to both Windows and Mac OS X. You can also create stunning iOS mobile apps for the iPhone, iPod Touch and iPad and distribute on Apple's App Store. Delphi FireMonkey applications take full advantage of the power and speed of your devices CPU and GPU.

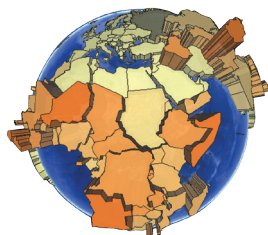
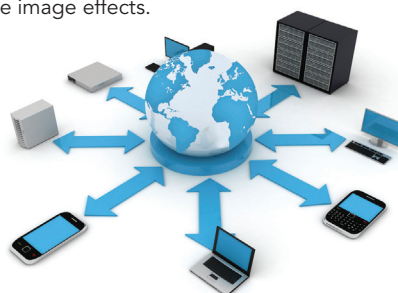


CREATE MORE VISUALLY STUNNING AND INTERACTIVE APPLICATIONS

Delphi's new FireMonkey application platform lets you easily build apps that are visually spectacular, highly interactive and data rich for PCs, Macs, and mobile devices. Build stunning HD and 3D user interfaces powered by GPU scalable vector graphics with programmable animation and hardware based Photoshop-like image effects.

BUILD APPLICATIONS THAT CONNECT EVERYWHERE

When you use Delphi, your applications get built-in high-speed connectivity to all popular databases. Delphi's RAD Cloud data and application services connect to all popular client platforms, frameworks, languages, and devices today. Connect iOS, Android, BlackBerry and Windows Phone 7 mobile applications to your DataSnap applications and database services.



DATA-AWARE UIs AND BEYOND – VISUALIZE LIVE DATA

Delphi's new LiveBindings let you connect any data source to any VCL or FireMonkey user interface or graphic element. LiveBindings give you the power and creative freedom to present data to users in more intuitive and interactive ways. LiveBindings also include expressions giving you incredible power and flexibility to build "dynamically" calculated and updated bindings.

New in Delphi XE2



- Full 64-bit compiler and frameworks for Windows
- Cross-platform development for Windows and Mac (OS X)
- Build mobile apps for iOS
- FireMonkey rich business application platform
- GPU-powered HD and 3D UIs
- 50+ Photoshop-like image effects
- LiveBindings to connect any UI element, vector or 3D object to any data source
- DataSnap Mobile Connectors for Android, BlackBerry, iOS and Windows Phone 7
- Customizable VCL styles
- FastReport reporting tool
- Documentation Insight doc tool

Key Product Features

- RAD Visual IDE with fast drag-and-drop UI design
- More than 500 visual controls
- Integrated native Windows and Mac compilers
- VCL touch and gesture support
- dbExpress with support for all major databases
- DataSnap data and application services with JSON, REST, HTTP, HTTPS and mobile device connectivity
- Centralized license management and tool deployment with Embarcadero® AppWave®
- Cloud computing integration with Amazon and Azure
- UML, code metrics and audits
- Access to previous Delphi versions (7, 2007-XE) included

CONNECTS WITH



Stunning HD and 3D business applications

- Rich GPU-based HD scalable vector UIs
- Maximum resolution on any device
- GPU powered 3D graphics and effects



Easily control UI styling

- Stylized VCL and FireMonkey UIs without coding
- Customize included styles or create your own



No-code hardware effects

- Over 50 built-in GPU powered effects in FireMonkey
- Apply multiple simultaneous effects
- Non-destructive



Put your data and logic in the cloud

- Run your business logic and data access in your own private cloud or Amazon EC2
- Works with Amazon and Azure cloud data



Features	Architect	Ultimate	Enterprise	Pro	Starter
INTEGRATED DEVELOPMENT ENVIRONMENT AND COMPILERS					
High productivity integrated visual development environment (IDE) with UI designers, code editor, Code Insight, build and debugging tools	X	X	X	X	X
New! Integrated Delphi native compiler for 32-bit and 64-bit Windows	X	X	X	X	32-bit only
New! Integrated Delphi native compiler for Mac OS X	X	X	X	X	
Advanced IDE features including refactoring, unit testing, remote debugging	X	X	X	X	
Bundled tools for reporting, logging, source control, web, installs	X	X	X	X	
LIBRARIES AND COMPONENTS					
New! FireMonkey rich application platform for Windows 32-bit/64-bit	X	X	X	X	32-bit only
New! FireMonkey rich application platform Mac OS X and iOS	X	X	X	X	
New! VCL 32-bit/64-bit framework with hundreds of visual components for creating user interfaces, database access and more (components vary by edition)	X	X	X	X	32-bit only
VCL source code to modify and customize the included components	X	X	X	X	
DATABASE, CLOUD AND MULTI-TIER ARCHITECTURE					
Local connectivity to InterBase via dbExpress and InterBase Express	X	X	X	X	X
Local database connectivity to MySQL with dbExpress	X	X	X	X	
Database server connectivity for leading database servers and ODBC	X	X	X		
DataSnap middleware for building application and data services	X	X	X		
Cloud computing with Amazon and Microsoft Windows Azure	X	X	X		
Fast SQL database development, database change management, SQL profiling, and SQL tuning with DB PowerStudio®, Developer Edition		X			
Database modeling and design with ER/Studio Developer Edition	X				
LICENSING					
Indie license for hobbyists and getting started					X
Full commercial development and deployment license	X	X	X	X	
Earlier version access to licenses for Delphi 7 and 2007-XE	X	X	X	X	

Delphi® XE2 System Requirements	For developing 64-bit Windows applications	For developing OS X applications	For developing iOS applications
<ul style="list-style-type: none"> • 1 GB RAM (2 GB+ recommended) • Between 3 - 7 GB free hard disk space depending on edition and configuration • DVD-ROM drive (if installing from a Media Kit DVD) • Basic GPU – Any vendor DirectX 9.0 class or better (Pixel Shader Level 2) • 1024x768 or higher-resolution monitor • Intel® Pentium® or compatible, 1.6 GHz minimum (2GHz+ recommended) 	<ul style="list-style-type: none"> • Mouse or other pointing device • Microsoft® Windows 7 (32-bit and 64-bit) • Microsoft® Windows Vista™ SP2 (32-bit and 64-bit) requires administrator rights • Microsoft® Windows XP Home or Professional (32-bit and 64-bit) SP2 or SP3 • Microsoft® Windows Server® 2003 SP1 or 2008 (32-bit and 64-bit) 	<ul style="list-style-type: none"> • PC running Windows connected with an Intel-based Mac, with 2 GB RAM or more, running OS X 10.6 (Snow Leopard) or OS X 10.7 (Lion) over a local area network using a SSH, VNC or Windows file sharing solution 	<ul style="list-style-type: none"> • On Snow Leopard: iOS 4.2 or 4.3 with compatible version of Xcode • On Lion: iOS 4.3 with compatible version of Xcode

Download a Free Trial at www.embarcadero.com

Corporate Headquarters | Embarcadero Technologies | 100 California Street, 12th Floor | San Francisco, CA 94111 | www.embarcadero.com | sales@embarcadero.com